

Kibitz Ken

Themes

**Forcing Bids
Hand Evaluation (HE)
Bidding Strong Hands**

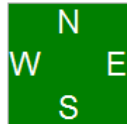
May 3, 2018 Lesson:
Slides 32-42

Board 6

East Deals

E-W Vul

♠ Q 10 3 2
♥ A K J
♦ J 10 9 8 5
♣ 7



	HE	♠	♥	♦	♣	+	-
East	12+						
West							

What's Your Plan?

West North East South
? 1♦ 2♦

- Pass
- X
- 2NT
- 3♦
- 3NT
- 4♣
- 5♦

Ask what their agreement is; don't assume it is Michaels.

HE (Diamond support): 12 2 8 1 0 +2 -1

P: Your hand is too good to Pass; share your strength and location of values with Partner.

X: 100%. This is an agreement you need to have over Michaels or U2NT. Double says it is our hand and I am willing to penalty X them in one or both suits.

2NT: This is not forcing and takes the opponents off the hook! Plus, you don't have a Club stopper!

3♦: This is not forcing and takes the opponents off the hook!

3NT: You still don't have a Club stopper! But, hey! that's what partners are for.

4♣: Splinter, you don't have enough HE to picture a slam; partner would need an HE of 20+

5♦: Why give up on NT? Just make forcing bids up to 3NT

R180317A#6

Board 6

East Deals

E-W Vul



♠ J 9 8 5 4

♥ Q 9 5 4 2

♦ 3

♣ J 5

West

North

East

South

1 ♦

?

- ❖ Don't show your distribution when your side is unlikely to benefit.
- ❖ Don't bid Michaels or Unusual 2NT because you have the "right" distribution.
 - Partner may bid too high with a fit.
 - Declarer can better picture the layout.
 - The opponents may choose one of your suits.

This was South's actual hand.

R180317A#6

Board 6

West Deals

E-W Vul

♠ A K 7 6
♥ 10 7
♦ A Q 7 4
♣ A 6 2



	HE	♠	♥	♦	♣	+	-
East							
West							

What's Your Plan & Bid?



West's hand is too strong to open 1NT. Plan on 1D and jumping to 2NT, except when Partner shows Spades. In that case, your hand is worth 20 and you'll bid 4S. When you know you have game (combined HE = 26+ for a major fit), bid game or force the bidding to game, don't invite.

R180317A#6

Board 6

West Deals

E-W Vul

♠ A K 7 6
♥ 10 7
♦ A Q 7 4
♣ A 6 2



	HE	♠	♥	♦	♣	+	-
East							
West	18	7	0	6	4	1	

❖ When HE is 18-19, open 1 of a suit and jump to 2NT.
❖ Plan your 2nd bid when making your 1st bid.

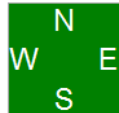
West's hand is too strong to open 1NT. This is a very good 18. Plan on 1♦ and jumping to 2NT, except when Partner shows Spades.

R180317A#6

Board 3

North Deals
E-W Vul

♠ Q 10 6 4 2
♥ J 4
♦ A Q 7 5
♣ 9 6



	HE	♠	♥	♦	♣	+	-
North	8	2	1	6	0	1	-2
South	22+						

What's Your Call?



West *North* *East* *South*
Pass Pass Pass 2 ♣
Pass ?

2♦ With an A, K or 6+ you respond with 2D unless you have a 5+card major with 2 of the top 3 honors or 6+card minor with 2 of the top 3.

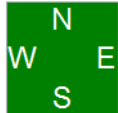
2♠ Your suit is not strong enough. Even with 6-card suit lacking 2 of the top 3, you would respond initially with 2♦ and then show your suit on the next round.

R180328A#3 Rotated

Board 3

North Deals
E-W Vul

♠ Q 10 6 4 2
♥ J 4
♦ A Q 7 5
♣ 9 6



	HE	♠	♥	♦	♣	+	-
North	12	2	1	6	0	3	
South	22+						

What's Your Call?



<i>West</i>	<i>North</i>	<i>East</i>	<i>South</i>
	Pass	Pass	2 ♣
Pass	2 ♦	Pass	2 ♠
Pass	?		

This is a surprise!

3D: This suggests a 6-card suit; you can't bid controls without suit agreement;

3S: 100% correct; you want to signal slam interest, so you go slow.

4S: You're too strong to "shut out" partner ("fast arrival")

4N: Don't bid 1430 with a worthless doubleton

R180328A#3 Rotated

Board 3
 North Deals
 E-W Vul

♠ Q 10 6 4 2
 ♥ J 4
 ♦ A Q 7 5
 ♣ 9 6



	HE	♠	♥	♦	♣	+	-
North	12	2	1	6	0	3	
South	22+						

What's Your Call?



<i>West</i>	<i>North</i>	<i>East</i>	<i>South</i>
	Pass	Pass	2 ♣
Pass	2 ♦	Pass	2 ♠
Pass	3 ♠	Pass	4 ♣
Pass	4 ♦	Pass	4 ♥
Pass	?		

4S: You have nothing more to add.

4N: **Don't bid 1430 with a worthless doubleton!**

6S: **Partner is the captain.** Don't rob her of the chance to ask for KCs

R180328A#3 Rotated

Board 3

North Deals

E-W Vul

♠ Q 10 6 4 2

♥ J 4

♦ A Q 7 5

♣ 9 6



	HE	♠	♥	♦	♣	+	-
North	12	2	1	6	0	3	
South	22+						

What's Your Call?



<i>West</i>	<i>North</i>	<i>East</i>	<i>South</i>
	Pass	Pass	2 ♣
Pass	2 ♦	Pass	2 ♠
Pass	3 ♠	Pass	4 ♣
Pass	4 ♦	Pass	4 ♥
Pass	4 ♠	Pass	4 NT
Pass	5 ♣	Pass	5 ♦
Pass	?		

5♠: You would make this bid if you lacked the trump Q.

6♦: You would bid this with the trump Q and the ♦K; this would also deny the ♣K

6♠: This is the response for this situation.

If you responded 2♠ over 2♣ your side can NO LONGER make 6♠ --- Another example of why you want the strong hand as Declarer.

R180328A#3 Rotated

Board 3

East Deals

N-S Vul

♠ A K J 9 7
♥ A K 9
♦ K J
♣ K 4 2



♠ Q 10 6 4 2
♥ J 4
♦ A Q 7 5
♣ 9 6

Hands are rotated for presentation

<i>West</i>	<i>North</i>	<i>East</i>	<i>South</i>
		Pass	Pass
2 ♣	Pass	2 ♦	Pass
2 ♠	Pass	3 ♠	Pass
4 ♣	Pass	4 ♦	Pass
4 ♥	Pass	4 ♠	Pass
4 NT	Pass	5 ♣	Pass
5 ♦	Pass	6 ♠	All pass

West was thinking of 7S when she started the 4C control bid. The 4H control bid was unnecessary in this auction, but for instruction reasons it was included to emphasize that Responder should still avoid bidding 4NT. Responder already indicated that he was interested in slam (3S and 4D), so Responder should bid as requested, in this case, with nothing else to say, Responder returns to the trump suit.

Board 3

North Deals

E-W Vul

♠ Q 10 6 4 2

♥ J 4

♦ A Q 7 5

♣ 9 6



- ❖ Unless you have 2/3 top honors in a suit, respond with 2♦ to allow 2♣ Opener to describe and be the declarer.
- ❖ Try to arrange your bidding so the strong hand makes the 1430 KeyCard Ask.
- ❖ Don't ask for KeyCards with a worthless doubleton.

<i>West</i>	<i>North</i>	<i>East</i>	<i>South</i>
	Pass	Pass	2 ♣
Pass	2 ♦	Pass	2 ♠
Pass	3 ♠	Pass	4 ♣
Pass	4 ♦	Pass	4 ♥
Pass	4 ♠	Pass	4 NT
Pass	5 ♣	Pass	5 ♦
Pass	6 ♠	All pass	

Summary of hand lesson.

R180328A#3 Rotated